

# AAUW CoastLines

Palos Verdes Peninsula Branch, Nov./Dec. 2016



Our Annual New Year's Social

Will be at the home of

JoAnn DeFlon  
2144 Via Pacheco  
Palos Verdes Estates, CA 90274

Saturday, January 21, 2017  
(details to be announced)

November/December  
2016

## Inside this issue:

Message from the  
Chair 2

Event notices 2

Fall Fiesta 3  
New Members

Tech Trek 4

Tech Trek 5

Interest Groups 6

AAUW Fellowship  
and Grant recipients 7

Branch Calendar 8

## BRANCH MEETING

Hesse Park  
Tuesday, November 15  
2-4 pm

There will be a recap of the the Global Warming  
presentation held at the last LACIC meeting.  
Presenters: Susan Negrete and Kay Odgers.

All members welcome

## MESSAGE FROM THE CHAIR



Time is flying by so fast. It's hard to believe we are in the last leg of 2016. There have been some good accomplishments in the last couple of months. First, we approved the revised Policies and Procedures which has our written regulations in alignment with our actual practices. Secondly, our 2016-2017 budget was approved. An ad hoc task force was formed to develop better guidelines on how to use the allotted money for conventions and seminars. If anyone is interested in participating, please contact Ruth Bloland or Marlin More. We are beginning to line up presentations for our future council meetings. In November, we are going to have a recap of the Global Warming panel discussion that was presented at the last LACIC meeting and in January, our own Judy Milestone will give us information on the three International projects she has been involved in.

The "Who Are We Anyway" (AKA – WAWA) group began meeting in 2010 with members who wanted to obtain answers to questions such as: What is the AAUW mission? What are National dues used for? What activities can our branch undertake to improve the lives of women and girls? In the ensuing years, WAWA has discussed AAUW research, funds and Public Policy and presented programs at Council meetings. Most recently, under the dynamic leadership of Sherry May, WAWA has encouraged use of a 3-meeting topic policy, nurtured the Marymount University relationship initiated by Trish Dilligan, and incubated numerous projects, including the Village, International Salons and Freedom From Fear.

At the October WAWA meeting, the many significant accomplishments made by WAWA in supporting the mission of AAUW were discussed, but due to busy schedules and dwindling participation/support, it was decided to disband WAWA at this time. Thanks to the many AAUW members who have served on WAWA and made a *positive impact on the PVP branch*.



Readers Theater is looking for new venues for performances for 2017. If anyone has a contact in a church, club, or other organization, which needs meaningful programs for its membership, please call Jacky Mason @ 310-377-3896. You will be helping RT make money for Tech Trek and helping to inform the community about AAUW.

### LACIC, NOVEMBER MEETING

LACIC's November meeting has a special guest speaker!—our own Jane Roberts, a member of the Redlands Branch of AAUW. Jane's topic will be "The State of Gender Equality in the United States".

**Sunday, November 13, 2016**

- 1-4 pm
- **Presbyterian Intercommunity Hospital  
12401 Washington Blvd, Whittier, CA**
- **Lower Level, Conference Room F**
- **Free Parking**

Information:

Marion Smith, marionsmith@gmail.com

Susan Negrete, susan.e.negrete@gmail.com

#### Dates to Note

November 19, 2016, meet Lis Maatz, AAUW Government Relations, 11-2pm, Alhambra.

January 08, 2017, meet Aileen Rizo, LAF litigant suing Fresno County Board of Education, 11-2pm, Pomona, and sponsored by LACIC.

For details, contact Kay Odgers at 310-367-0621 or dokokk@aol.com.



# FALL FIESTA



The American Association of University Women, Palos Verdes Peninsula (AAUW-PVP) recently held its annual Fall Fiesta. Displays for all of the branch projects and interest groups were gathered in one room and the full scope of branch activity was on view. Members and guests were able to reconnect with friends after the summer and to hear about the variety of activities planned for the coming year.

Elayne Nahman, Branch Chair, conducted the meeting and JoAnn DeFlon organized and chaired the event. Special recognition was given to two of our members:



Susan Negrete was presented the prestigious AAUW *Status of Women Award* by Jacky Mason, chair of the selection committee. The award was established in 1969 and recognizes a woman who has utilized her leadership talents for the benefit of AAUW's mission in the community and who is an outstanding role model for girls and other women

ship talents for the benefit of AAUW's mission in the community and who is an outstanding role model for girls and other women



Jacky Mason was presented with a certificate for being a member of AAUW for 50 years. It was presented to her by Kay Odgers, Membership Co-Chair. Her granddaughter, Crystal Mason, was there to see her receive it.

## MEMBERSHIP

**Membership Co-chairs Kay Odgers and Leann Roque are proud to introduce our new members:**

**Kathy Bartow:** University of San Francisco. She learned of our branch from Fran Wielin. She is interested in our Walking Group and Pinochle

**Judy Diebes:** University of Saskatchewan. Judy is a friend of McNair Maxwell.

**Pam Gudish:** Cal Poly SLO, BA and Masters. She is a friend of JoAnn DeFlon

**Sandy Gurewitz:** Loyola Marymount, Masters UCLA.. She is a friend of Myrna Plost. Sandy is interested in Art, WIT and the Lunch Bunch

**Harriet Hart:** Douglass College, Masters Rutgers. Harriet is interested in Bridge, Art and Pinochle

**Crystal Mason:** Utah State University, Masters University of Birmingham, England. She is a granddaughter of Jacky Mason.

**Nancy Pasquali** graduated from Wellesley and has a Masters from UCLA. She is a friend of Margery Norris. She is interested in Council, Eclectic Readers and Art.

**Charlene Pickarts:** UC Santa Barbara, She learned of AAUW through friends. She is interested in Exploring Science, Bridge and Pinochle.

**Ginny Schmeichel:** College of St. Thomas and University of La Verne. She is interested in Tech Trek, Night Books, Walkers, Lunch Bunch and other book groups. She learned of AAUW from Denise De Venuto.

**Karen Trivedi:** CSU Dominguez Hills. She is an instructor there. She is a friend of McNair Maxwell and is interested in WIT.

# Celebrating Tech Trek 2016

Our branch's annual Celebrate Tech Trek on September 18 at Hesse Park was a culminating event in a yearlong effort to select seventh grade girls from Dana Middle School in San Pedro and Wilmington Middle School for an inspiring and life-changing week at Tech Trek camp. Many thanks are owed to those who made the event possible: Vera Pashky for making lemonade and helping set up tables and chairs, Carolyn Ayers for making the delightful goodie bags, Judy Purvis, Margery Norris and Muriel Blatt for scooping ice cream, Dale Richards and PVP branch Tech Trek Treasurer Kathy Ford for checking in campers and families, and Rowie Wolf and Ruth Bloland for checking in branch members. Branch Council Chair Elayne Nahman and Tech Trek Chair Denise DeVenuto introduced the campers with quotes from teacher recommendations, application essays, or post-camp survey comments. Members warmly welcomed the families and lively discussions were held with the girls.



On behalf of Readers Theater, Jacky Mason presented a donation of \$1,000. This got our fund-raising efforts off to a promising start and was met with a strong round of applause, especially from the campers!

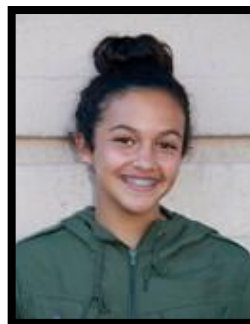
Celebrate Tech Trek was a great opportunity for branch members to hear campers share their camp experiences. Several alumnae campers spoke about how Tech Trek camp had a strong influence on their continuing interest in science and math. The 2016 campers' exposure to STEM careers became clear during the panel discussion. One of the many questions included during the panel discussion was whether the girls thought they would someday apply to the UC campus where they attended camp. The verdict was a resounding, "Yes." Responses like this validate all the months of effort dedicated by the Tech Trek committee members in deciding which applicants will be awarded a \$900 camp scholarship from our branch.

## Meet Some of the Girls



Mia DiConstanzo  
Dana Middle School

Mia likes to paint, read, play tennis, and volunteer at the local aquarium. In her essay, Mia said she'd enjoy being a teacher or owning and working at a bakery, but since attending camp, she's now interested in being a marine biologist.



Maya Escudero  
Dana Middle School

Maya likes to draw, make her own shirts, paint, sculpt, and do needle felting. She'd like to be a mechanical engineer because she enjoys solving problems and she's curious about how things work.



Kaley plays soccer year round which motivated her to be very good at time management. Taking robotics at school led her to realize she really enjoys figuring out the best ways to build or design things. She'd like to be an industrial engineer.

Kaley Sutrin  
Dana Middle School



Jowi has been a 4.0 student since first grade. She is a World Champion in Brazilian Jiu-Jitsu. Jowi enjoys reading, Mexican folk dance and art. She adores animals and has always wanted to be a veterinarian.

Jowi Herrera  
Wilmington Middle School



Sara is a straight A student and would like to study marine biology at UCLA or UCSB. She wrote an essay that helped the LA Maritime Institute win a grant. She hopes to return to Tech Trek camp as a Junior Counselor.

Sara Rodriguez  
Wilmington Middle School



Ashley plays the clarinet and enjoys reading and playing soccer. At camp, she built a remotely operated vehicle for a presentation. She wants to be a structural engineer because she loves math.

Ashley Uriostequi-Rodriquez  
Wilmington Middle School



Her teacher said she is an excellent student who enjoys doing math and making sense of problems. She plays clarinet, enjoys soccer, and has been taking hula classes since she was five. Mimi would like to be an aeronautical engineer.

Mimi Caseres  
Dana Middle School



Bridney's teacher noted that she is a very college-oriented student and the perfect candidate for Tech Trek. Although Bridney has not yet decided on a STEM career, she plans to take a math class every year of high school to keep her options open.

Bridney Rodriguez  
Wilmington Middle School

**Women are underrepresented in the well-paying field of STEM careers. The PVP branch has been doing its part since 1998 to fulfill AAUW's mission to advance equity for women through education by supporting the Tech Trek scholarships that have sent 158 girls to camp. This year the Tech Trek scholarship fund is currently lower than in previous years. It appears at this time, that we will be unable to send 12-16 girls to camp next summer, as we have done since 2008. Given the life-changing impact these camp scholarships have provided, we'd like to encourage as many branch members as possible to donate whatever they can.**

**Please mail your tax-deductible donation to our PVP branch Tech Trek Treasurer Kathy Ford at 6429 Parklynn Drive, RPV, 90275.**

# INTEREST GROUPS—NOVEMBER 7 DECEMBER

## ARTS & ARTISTS

Chair Nancy Leonard 310-519-1606  
3<sup>rd</sup> Tuesday 7pm

Nov. 15 home of Kathleen Fitzgerald  
The Genius of C.W. Peale

Dec.-TBA

## ART APPRECIATION

Chair Nancy Rayner  
(nrayner777@gmail.com)  
3<sup>rd</sup> Wednesday 2-4pm

November 16-Landscapes-Art of the  
Great Outdoors. Close observation-  
Cezanne, Van Gogh, Homer

December—holiday luncheon

Space is limited. Anyone interested in  
attending should contact Nancy at  
nrayner777@gmail.com

## READER'S THEATER

Chair Jacky Mason 310-377-3896  
2<sup>nd</sup> Monday 7pm

November 14: home of Kathleen  
Fitzgerald

December 12: holiday get-together at  
the home of Jane Jones

## THE VICTORIAN AGE

contact persons:  
Jacky Mason 310-377-3896  
Maria Ashla 310-541-5234

Video, lectures, discussion and  
movie

## CONTEMPORARY LITERATURE

Chair Barbara Prassas  
310-519-8044  
2<sup>nd</sup> Monday 9:30am

November 14: home of Kathleen  
Fitzgerald  
*Circling the Earth* by Paula McClain

December 12—lunch at Terranea

## ECLECTIC READERS

Chair Jan Cofer 310-791-8337  
3<sup>rd</sup> Thursday 2pm

November 17: TBA

December 15: Lunch at the Palos  
Verdes Golf Club

## NIGHT BOOKS

Chair Rowie Wolf 310-373-5970  
2<sup>nd</sup> Monday 7pm

November 14: home of Maria Ashla  
*The Light Between Oceans* by M.L.  
Stedman

December 12: holiday dinner at  
Seashore Seafood

## BRIDGE-ETTES

Chair Margery Norris 310-514-3980  
3<sup>rd</sup> Tuesday 1pm

*{Please note change of date and  
remember the new address for Sue  
Johnson.}*

November 8: home of Sue Johnson

December 13: 11:30am – 3:30pm  
Holiday Bridge Luncheon—Seaview  
Clubhouse on Highridge.

RSVP: call Margery or e-mail her  
at mnorris@ca.rr.com

## GRAND SLAMMERS

Chair Sara Bowlus 310-541-2767  
2nd Thursday 1pm

November 10: home of Carol Torelli

December 13: 11:30am-3:30pm  
Holiday Bridge Luncheon-Seaview  
Clubhouse on Highridge.

RSVP-Call Margery or e-mail her at  
mnorris@ca.rr.com



## PINOCHLE

3<sup>rd</sup> and 4<sup>th</sup> Tuesday  
Chair Elayne Nahman 310-541-6839

Location TBA

## WOMEN IN TRANSITION-WIT

Chair Susan Negrete 310-377-0642  
susimone@aol.com  
1<sup>st</sup> Wednesday 7:00-8:30pm  
708 Yarmouth Rd, Lunada Bay

November 2: Managing Holiday Stress  
RSVP to Susan by November 1.

December 7: Annual Holiday Potluck and  
Celebration.

Bring an appetizer or dessert to serve 6.  
RSVP to Susan by Monday, December 5.

## GREAT DECISIONS

Chair Sharon Andrade 310-541-2417  
3<sup>rd</sup> Monday 9:30am, PV Shores Club  
House

November 21: Topic: Cuba and the United  
States

## GREAT DECISIONS

Chair Kathleen Fitzgerald 310-373-0946  
3<sup>rd</sup> Monday 10am, Northside

November 21: home of Susan Wallace  
Topic: Climate Geopolitics

New members welcome.

## LUNCH BUNCH

Chair Jann Segal  
jannsegal@earthlink.net  
4<sup>th</sup> Wednesday of the month  
12 noon at Fu Yuan Low

## WALKERS

Chairs Kathleen 310-373-0946  
Cordelia 310-541-3261

Call Kathleen to confirm walk is on.  
Location: cliffs at the south end of  
Hawthorne Blvd

Flash!! Just in!! We honor AAUW Fellowship and Grant recipients and their extraordinary research accomplishments.

On October 23, I had the honor of representing our branch at Southern California's Funds Luncheon and assist Sharon Westafer, State Chair. From a Long Beach teacher, to a Bosnian war refugee, a lovely young woman from Greece, to a home-grown techie, they are inspiring and delightful.

Kay Odgers





First  
Class  
Postage

**American Association of University Women  
Palos Verdes Branch  
P.O. Box 2443  
Palos Verdes Peninsula, CA 90274**

<http://aauw.org>  
<http://aauw-ca.org>  
<http://palosverdes-ca.aauw.net>

**AAUW Mission Statement**  
AAUW advances equity for women and girls through advocacy, education, philanthropy and research.

**Council Chair: Elayne Nahman**

**Treasurer: Faith Morrow**

**Membership Chairs: Kay Odgers and Leann Roque**

**Editor: Eunice McConaughy  
310-530-5847  
eunicemc@pacbell.net**

**Deadline for Jan/Feb issue of CoastLines: December 15, 2016**

<b>BRANCH CALENDAR</b>	
<b>Sun, November 13, LACIC</b>	<b>2-4pm—Presbyterian Community Hospital, Whittier</b>
<b>Tue, November 15, 2016</b>	<b>Branch meeting—Hesse Park 2-4pm</b>
<b>Tue, January 10, 2017</b>	<b>Branch meeting—Hesse Park 2-4 pm</b>
<b>Sat, January 21, 2017</b>	<b>Holiday Party 2-4 JoAnn DeFlon's home</b>